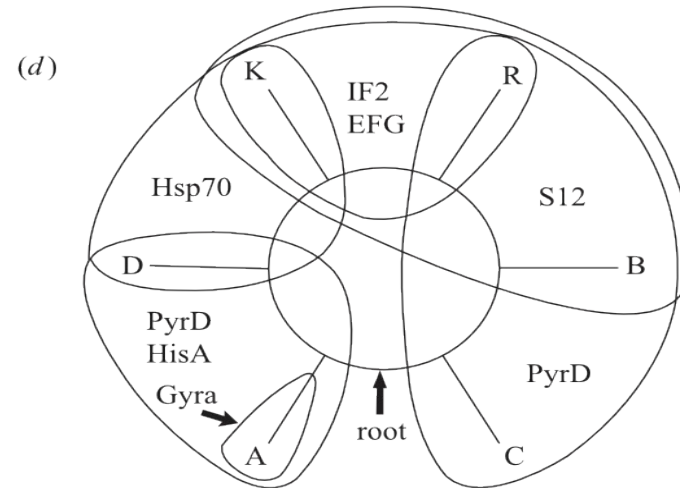
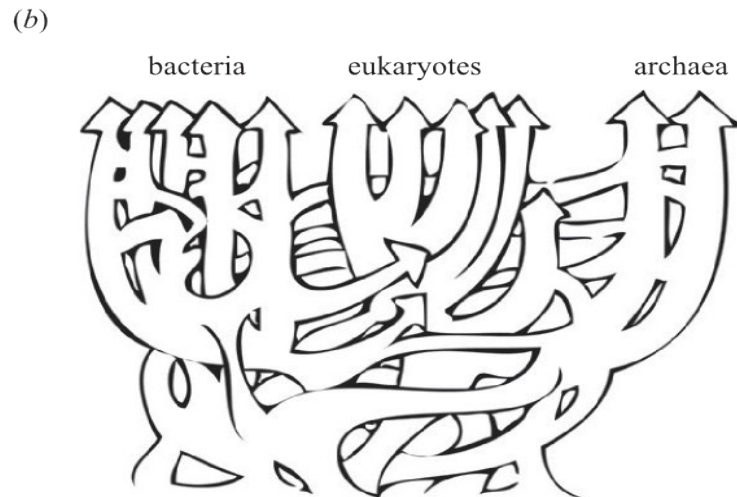
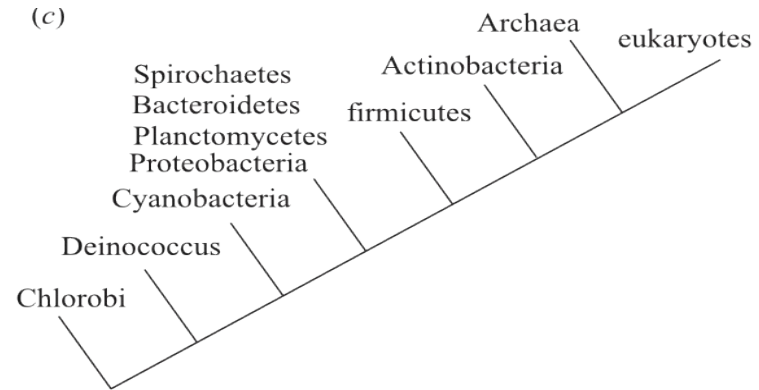
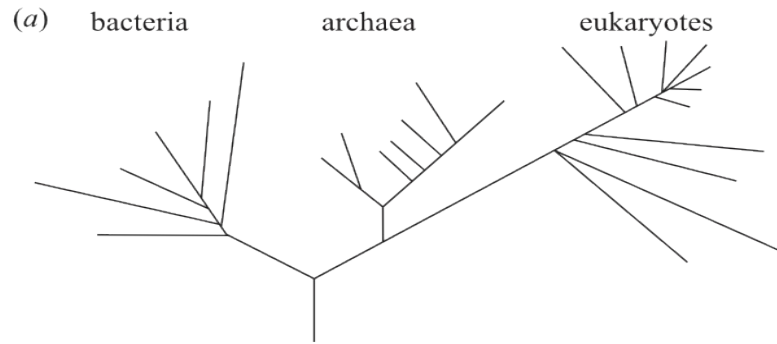


Rooting the Tree of Life

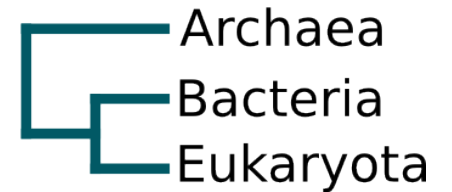
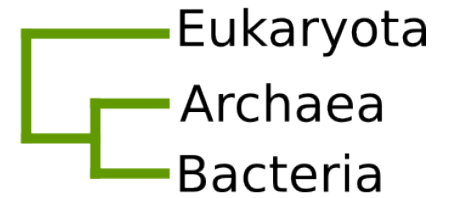
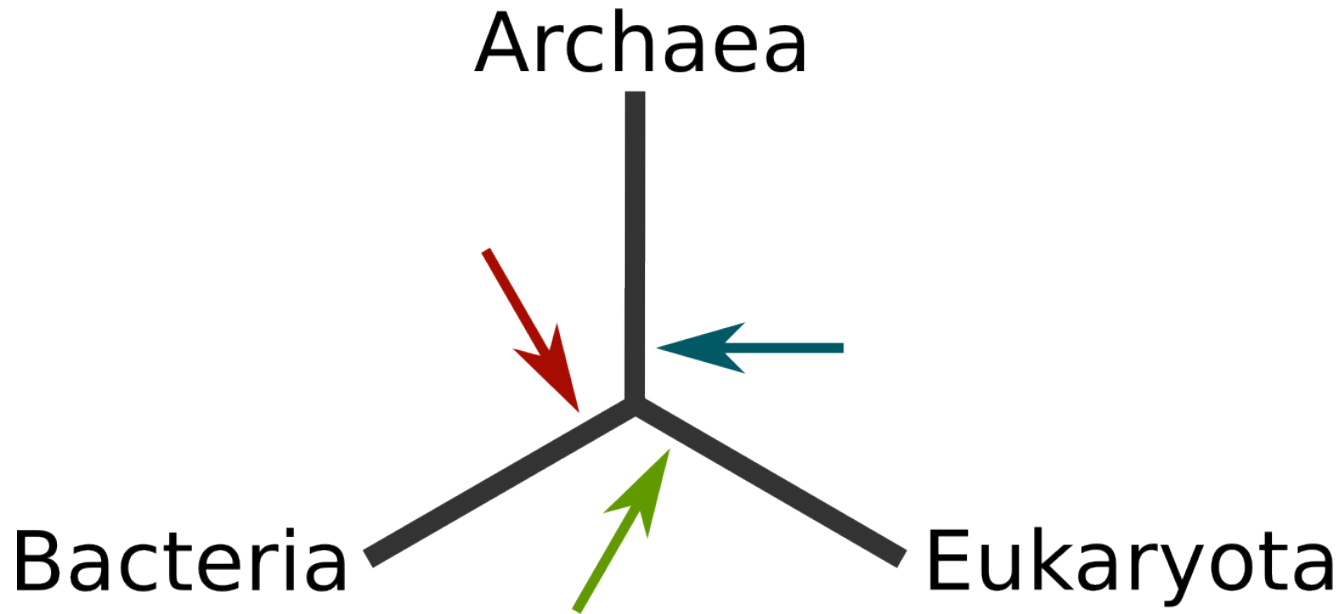


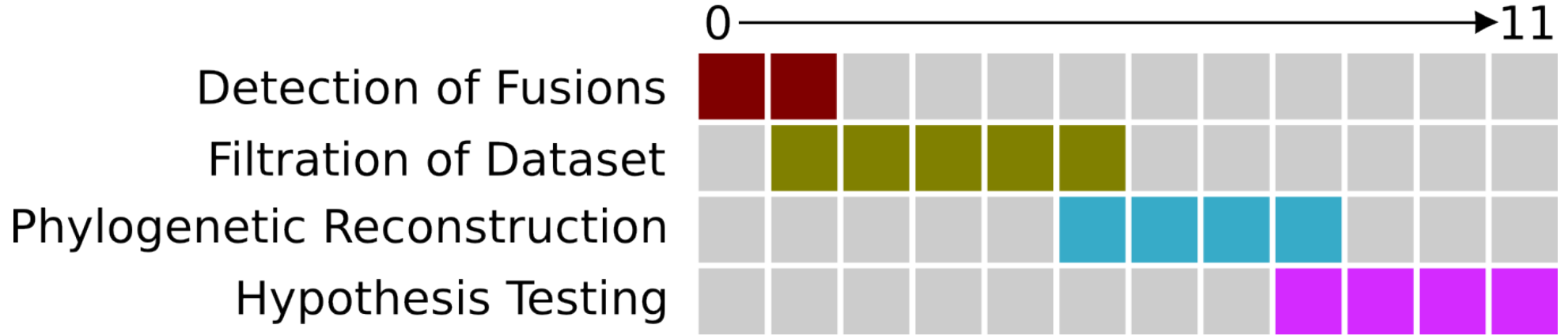
A – Actinobacteria D – DM prokaryotes
 B – Bacilli K – eukaryotes
 C – Clostridia R – Archaea

Figure reproduced from Lake et al., 2009

Finlay Maguire
 University College London
 Natural History Museum, London
 University of Exeter

Trait Polarisation





Estimated Computational Requirement: 180k CPU hours

Cost highly dependent on access to HPC: ~£2-4k

Salary: ~£2-5k (location dependent)

Total Cost of Project : ~£4-9k